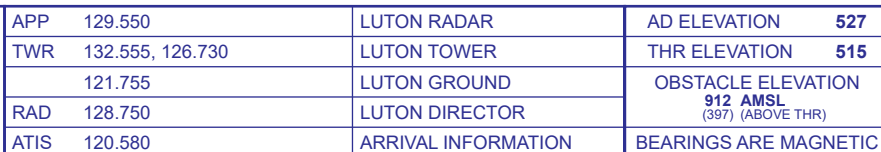


**SRA RTR 2NM
RWY 07**
(ACFT CAT A,B,C,D)

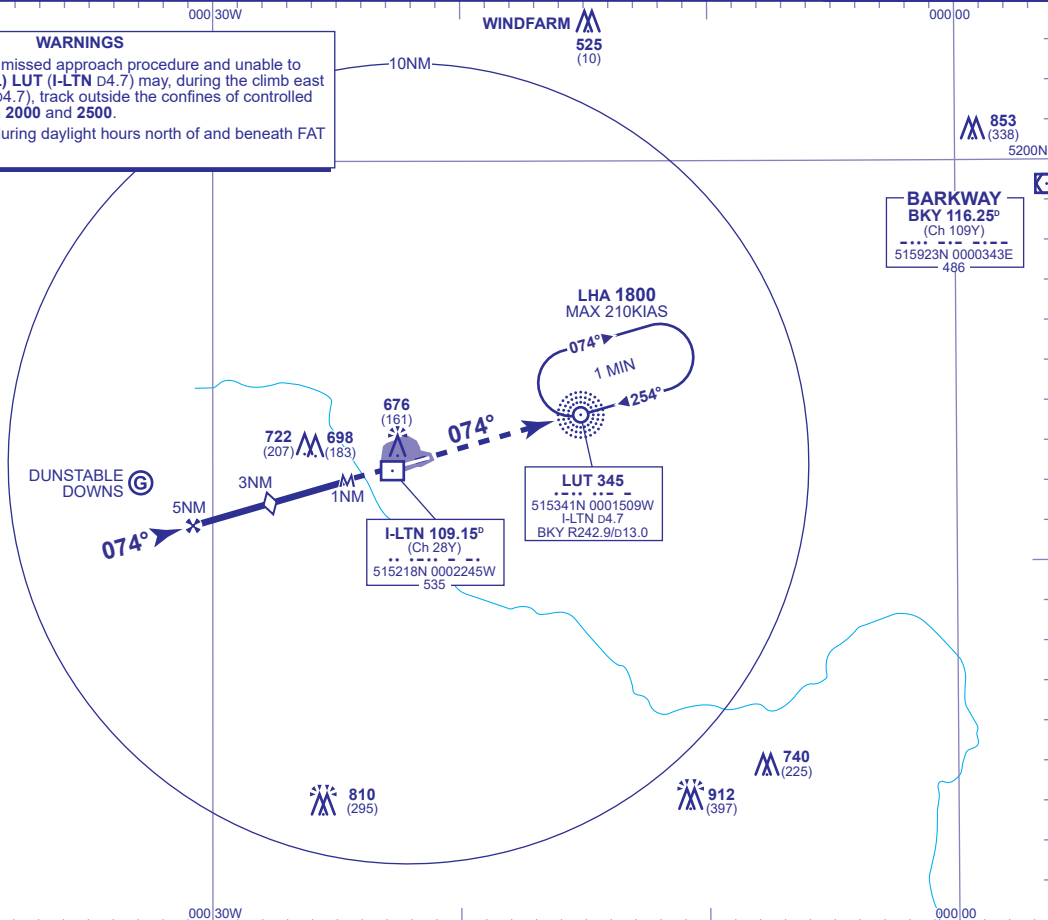


TRANSITION ALTITUDE
6000

WARNINGS

Aircraft carrying out the missed approach procedure and unable to achieve **2000** by **NDB(L) LUT (I-LTN D4.7)** may, during the climb east of **NDB(L) LUT (I-LTN D4.7)**, track outside the confines of controlled airspace whilst between **2000** and **2500**.

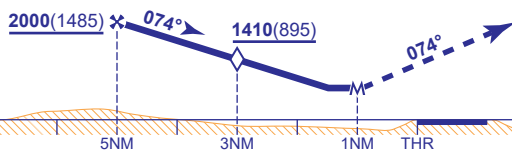
Intense gliding activity during daylight hours north of and beneath FAT (see note 2).



RADAR ADVISORY HEIGHTS Gradient 4.9%, 297FT/NM

| NM | 5.0 | 4.0 | 3.0 (SDF) | 2.0 |
|----------|------------|------------|-----------|-----------|
| ALT(HGT) | 2000(1485) | 1700(1185) | 1410(895) | 1110(595) |

Initial and intermediate approach as directed by radar.



NDB(L) LUT

MAPT 1NM after RTR

Climb straight ahead to **NDB(L) LUT (I-LTN D4.7)** to hold at **3000**, or as directed. Aircraft which achieve **2000** by **NDB(L) LUT (I-LTN D4.7)** continue climb in the hold. Aircraft unable to achieve **2000** by **NDB(L) LUT (I-LTN D4.7)** inform ATC and continue climb on **NDB(L) LUT QDR 074°** to **2000** then turn right to **NDB(L) LUT (I-LTN D4.7/BKY R242.9/D13.0)** to hold at **3000** or as directed.

| Aircraft Category | | A | B | C | D | Rate of descent | G/S KT | 160 | 140 | 120 | 100 | 80 |
|--------------------|------------|-----------|-----------|-----------|-----------|-----------------|---------|------|------|------|------|------|
| OCA (OCH) | Procedure | 990(475) | 990(475) | 990(475) | 990(475) | | FT/MIN | 790 | 690 | 590 | 500 | 400 |
| VM(C)OCA (OCA AAL) | Total Area | 1100(573) | 1100(573) | 1300(773) | 1300(773) | RTR to MAPT | MIN:SEC | 0:23 | 0:26 | 0:30 | 0:36 | 0:45 |

NOTE 1 Aircraft will normally be required to hold not lower than **3000**.

2. Gliding takes place in ceded airspace north of and beneath LOC. Pilots are warned not to descend below the GP/recommended descent profile. Page EGGWAD 2.22 Paragraph 6 refers.

CHANGE (9/25): TOWER FREQUENCY.

AD 2-EGGW-8-3